

July 2016 Revision Information

Update on Revisions
made to the eCHAM
as of July 17, 2016



ALASKA NATIVE
TRIBAL HEALTH
CONSORTIUM

eCHAM



ACCESS. KNOWLEDGE.



www.akchap.org

- One stop resource area
 - Training material
 - Calendar
 - Contact Information
 - Reference Material

The screenshot shows the homepage of the Alaska Community Health Aide Program. The header features the program name in a blue banner with a search bar on the right. Below the header is a navigation menu with links for Home, About CHAP, Calendar, CHAPCB, CHAM, Distance Learning, Resources, and Library. The main content area is divided into two columns. The left column contains a welcome message: "Welcome to the Alaska CHAP Program" followed by a paragraph describing the program's mission. The right column contains a list of links: Learning Tools, Product Requirements, CHAM Staff, CHAM Revision, and Manager Training. At the bottom right, there is a logo for eCHAM with the tagline "ACCESS. KNOWLEDGE." and a small globe icon.

Alaska Community Health Aide Program Search

Home About CHAP Calendar CHAPCB CHAM Distance Learning Resources Library

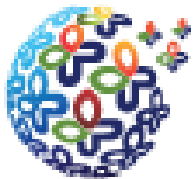
Welcome to the Alaska CHAP Program

The Community Health Aide Program (CHAP) consists of a network of Community Health Aides/Practitioners (CHA/Ps) in over 170 rural Alaska villages. CHAP staff use the Alaska Community Health Aide/Practitioner Manual in assessing and providing health care in their communities. Alaska CHAP staff provide health care in their communities.

Learning Tools
Product Requirements
CHAM Staff
CHAM Revision
Manager Training

Community Health Aides/Practitioners of the Alaska Community Health Aide Program provide health care in their communities.

eCHAM
ACCESS. KNOWLEDGE.



eCHAM on Facebook

- www.facebook.com/eCHAMProjectOffice
- Be sure to “like us” to keep track of what is happening with the eCHAM.





The eCHAM Website

<https://access.echam.org>

- Allows you to access the eCHAM online.
- Login with the Username and Password assigned to you during training with your THO.
- If you don't have an account, contact us at echam@anthc.org to set one up.
 - Please provide your first and last name, work phone, work email and organization. An account can be set up same day M-F.





The iPad App: iCHAM

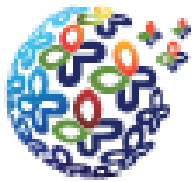
- Available on the Apple App Store!
 - Search terms: eCHAM, iCHAM, or CHAP
 - Same Username and Password as your eCHAM.
- If it's already downloaded, content will update the first time you login while connected to your Wi-Fi.



The eCHAM eBook

- Available for download to your iPad, Kindle, and Kindle for PC program.
 - <https://access.echam.org/exist/rest/anthc/downloads/eCHAM.epub> for your iPad,
 - OR
 - <https://access.echam.org/exist/rest/anthc/downloads/eCHAM.mobi> for your Kindle.
- Note: Web address is case sensitive.
- Meant as a backup if your iCHAM doesn't work and/or the website is down.
- Your notes, highlights and bookmark made in the eBook WILL NOT transfer when you upload a new version.





eCHAM PDF

- Available for download at:
 - https://access.echam.org/exist/rest/db/anthc/downloads/CHAM-Patient_Education.zip
 - Contains printable Patient Education PDFs.
- Can be used on your computer, smart phone, tablet, iPad, eBook Reader, etc.
- Printable version will be available in the future after Emergency medicine sections of the eCHAM are updated.





Patient Care Visit

- How To Use The CHAM and CHAP Overview:
 - References to hyperlinks (now available in both the electronic and PDF versions) have been added.
 - References to the CD-ROM have been deleted.
 - Added a “Features of the Electronic CHAM” section to the How To Use, focusing on features unique to the function in this format.
 - Content updated to reflect 2016 CHAP Program information and references.
- Acknowledgements:
 - Refined to include general statement of appreciation to all who have contributed to the CHAM revisions over the years.
 - The Acknowledgements, Preface and Copyright content have been converted to a single page that will appear in the front of the PDF.





TB Information in Patient Care Visit

- Respiratory Chapter
 - Tuberculosis, TB Skin Test, New Positive TB Skin Test or TB Skin Reaction, Patient on TB Medicine: Follow-up Visit
 - Updated
 - Contact information for the State of Alaska.
 - Information about high-risk patients.
 - Information about the stages of TB and how they are labeled.
 - TB prevention and early detection section.
 - Treatment.
 - Who gets TB skin tests and when.
 - History questions asked before PPD.
 - Patient Education.
 - When test is repeated if doctor orders repeat.
 - What constitutes positive PPD.
 - What to do for patients with a new positive PPD.
 - Serious side effects of TB medicines.
 - History Questions asked when rechecking patient on TB medicines.
 - Exam findings to watch for in patients on TB medicines.
 - Medications that should not be taken with TB medicines.
 - Symptoms patient should return to clinic for, when taking TB medicines.
 - Removed information that some TB meds cause eye problems, due to changes in drugs used for TB.
 - Reorganized signs of TB from most likely to least likely signs/symptoms.





TB Information in Reference/Procedure

- Lab Tests Chapter
 - Sputum for TB Testing
 - Updated
 - Links to state documents, necessary forms and proper labeling information for sputum collections.
 - Information about types of tests used for TB testing .
 - Information about TB collection products.
 - Patient Education on how to collect sputum sample.
 - Information about how to properly package samples to send to the State.





Thank You!

Thank you for taking the time to learn about the revision.